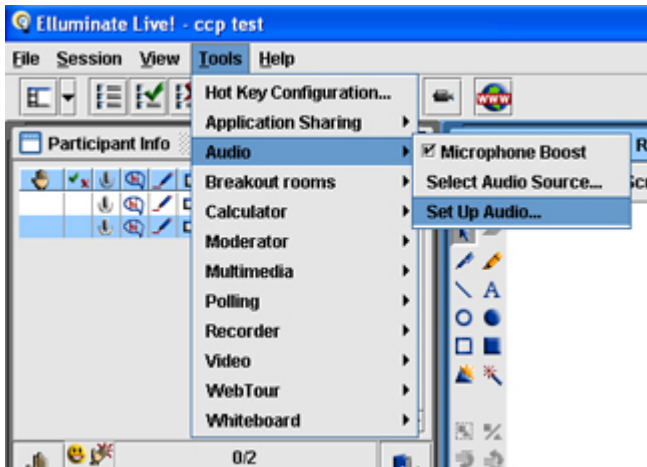


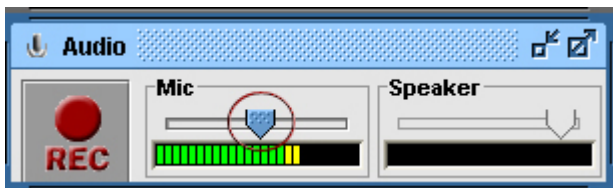
Setting Up Audio in Elluminate

1, Set up audio levels

- Select *Tools > Audio > Set Up Audio...*

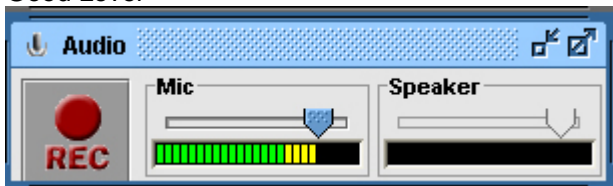


- Follow the on screen instructions for setting the audio and microphone levels on your computer
- Move the slider to the right or left to adjust the level.



Proper microphone levels should show primarily in the green and yellow with the occasional red on the meter.

Good Level



Bad Level (Too High)

